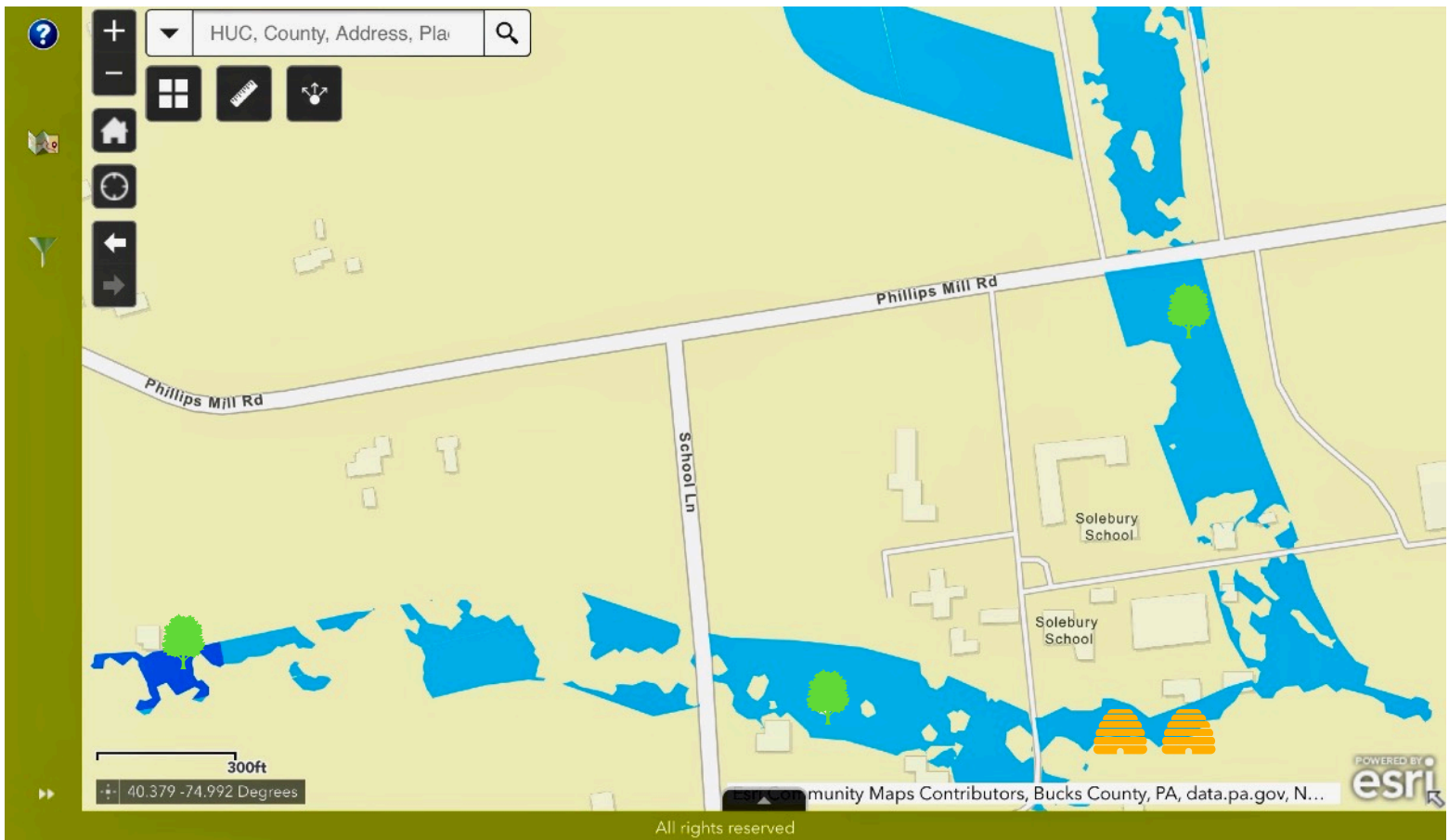




Final Report to the Lower Delaware Wild and Scenic River Management Council
c/o Delaware River Greenway Partnership

Restoring Canopy and Understory Habitat in the **Primrose Creek Riparian Priority Zones**; “New Hope for Delaware River Water Quality from **Trees** and **Bees** in Solebury.”



The priority “**blue-blue** high value” restoration areas along the Primrose Creek and the successfully completed 2022 LDW&SR grant **TREE / BEE HIVE** restoration areas are displayed on this PA Land Trust Alliance (PALTA) plan.

LDW&SR Mini Grant Description & Work Accomplished

This Mini Grant is a \$4856 discrete implementation project managed by Primrose Creek Watershed Association (PCWA) within its overarching watershed implementation plan (WIP).

This LDW&SR grant initiates the restoration of prioritized areas. These integrated habitats of shrubs and trees will buffer and stabilize eroding stream banks, cool water, increase dissolved oxygen and support bee populations along the Primrose Creek. The 2022 LDW&SR Mini Grant project installed two honeybee hives and a mixed hydrophilic understory of serviceberry, sassafras, buttonbush and red twig dogwood shrub varieties transitioning to a tree canopy of bee loving celestial dogwood, linden, spicebush, and hackberry (70) trees at the model half acre, deer exclusion zone planting sites along the Primrose Creek concentrated on the Solebury School campus



Partners Cindy Kunnas, LDW&SR Projects Director & Francis Collins, PCWA President





**Deeply eroded and incised riparian area
February 20, 2022**



**Deer exclusion fencing, trees, shrubs
April 12, 2022**



April 13, 2022



May 2022



May, 2022



June, 2022



The restorative pollinating potential of one bee is exponentially multiplied by 'Her Majesty' and thousands of her worker bees.



In Bee Castle #1 resides 20,000 bees.



... 20,000 more in #2 Bee Castle

Matching Funds & In-Kind



Volunteer Work

LDW&SR GRANT IN-KIND wages

Summary		
Name	Total Hours	@ \$7.25
Staci Freer	24:00	174:00
Ed Leydon	30:00	218:00
Francis Collins	60:00	435:00
Larry Hampt	24:00	174:00
John Francis	16:00	116:00
Carol Cope	10:00	73:00
Jeremy Pfancook	4:00	29:00
Ari Leydon	8:00	58:00
Charlie Flack	8:00	58:00
Carl Flaxman	4:00	29:00
Bob Magerr	4:00	29:00
Tim Hayes	6:00	44:00
Bill Birnes	2:00	15:00
Johnny Winterbottom	30:00	218:00
Hope Blaythorne	4:00	29:00
Kevin Morrissey	4:00	29:00
Peter Grover	2:00	15:00
Diane Downs	16:00	116:00
Cari Nelson	2:00	15:00
Bill Scott	2:00	15:00
Chris Canadian	2:00	15:00
Gene Lamhant	2:00	15:00
Tristan Deoghes	2:00	15:00
Vivien Cave	2:00	15:00
Mackenzie Peres	2:00	15:00
Alex Tess	2:00	15:00
Tessa Lefante	2:00	15:00
Will Saltzman	2:00	15:00
Alexander Zi	2:00	15:00
Dan Swartz	2:00	15:00
Allison Hamilton	2:00	15:00
Neena Lessing	2:00	15:00
Phillip Grey	2:00	15:00
Jared Ceil	2:00	15:00
Connor Waters	2:00	15:00
Russ Carrids	2:00	15:00
Ed Hawkey	2:00	15:00
Gerry Miller	6:00	44:00
Cindy Kunas	3:00	22:00
Robert Mc Ewan	2:00	15:00
Total	305:00	\$2211.00



The impact of the LDW&SR mini grant was apparent from the first day of planting. The barren, void creek side, eroding landscape of February 20, was instantly transformed to a lush, integrated habitat of shrub and tree buffers in May that will begin to stabilize eroding stream banks, cool the water and support honey bee pollinators along the Primrose Creek’s 2.7 square mile watershed.

Primrose Creek Watershed Association will continue to replicate this model project through out the watershed until the goal of restoring Primrose Creek is complete in 2028.

Francis Collins, PCWAPresident